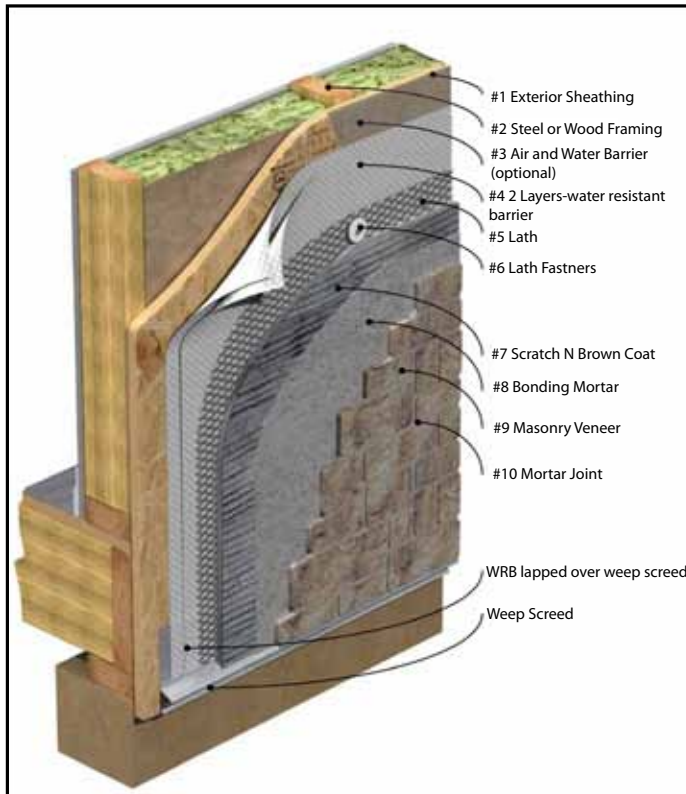


Stud - Exterior Wall Lath - Cement Plaster Base

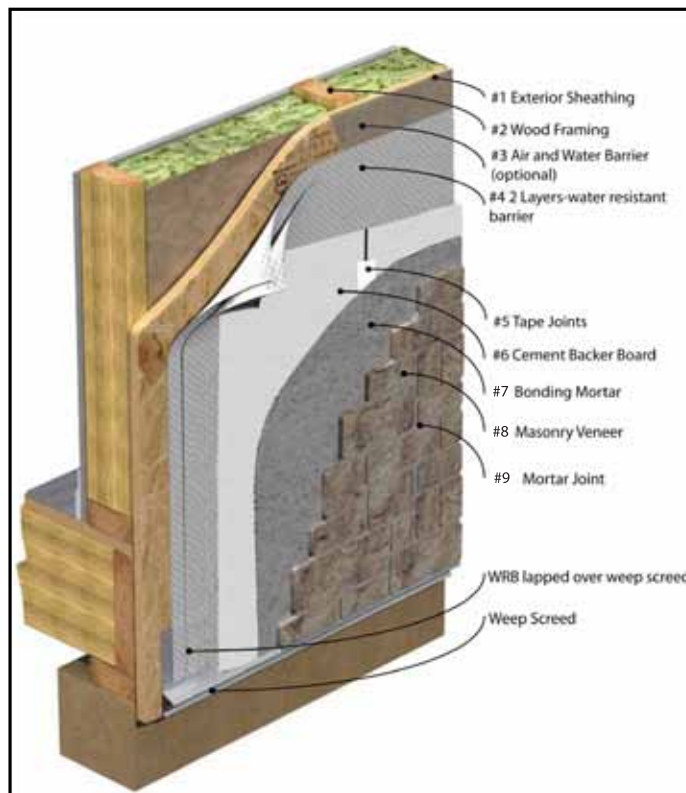


1. Exterior sheathing
2. Wood studs / Steel Studs
3. Air and Water Barrier - (Optional) - R-Lastic
4. 2 layers water resistant barrier - per specifications and code
5. Lath
6. Lath Fasteners
7. Scratch-N-Brown Coat - (Options)
 - Mac Scratch N Brown -Premium
 - Mac Scratch N Brown-Plus
 - Mac Scratch N Brown
8. VBM Bonding Mortar - (Options)

<u>Thin bed</u>	<u>Medium-Thick Bed</u>
VBM Bonder	VBM-Poly 500
VBM Poly Thinbrick	VBM-Poly 300
VBM Thin Set	VBM-Poly LFT
	VBM
8. Adhered Masonry Veneer
9. Joint Grout (Options)

<u>Masonry sand (>3/8)</u>	<u>Fine Sand (1/8-5/8)</u>
Mac Mortar-Premium	VP Joint Grout-Premium
Mac Mortar-Plus	VP Joint Grout
Mac Mortar	

Stud - Exterior Wall Cement Backer Board Base



1. Exterior sheathing
2. Wood studs / Steel Studs
3. Air and Water Barrier - (Optional) - R-Lastic
4. 2 layers water resistant barrier - per specifications and code
5. Taped Backer Board Joints
6. Approved Backer Board - Exterior Grade
7. VBM Bonding Mortar - (Options)

<u>Thin bed</u>	
VBM Bonder	
VBM Poly Thinbrick	
VBM Thinset	
8. Adhered Masonry Veneer
9. Joint Grout (Options)

<u>Masonry sand (>3/8)</u>	<u>Fine Sand (1/8-5/8)</u>
Mac Mortar-Premium	VP Joint Grout-Premium
Mac Mortar-Plus	VP Joint Grout
Mac Mortar	

Stud - Interior Wall Cement Backer Board Base

Water Resistant barriers may be eliminated in areas Not exposed to water