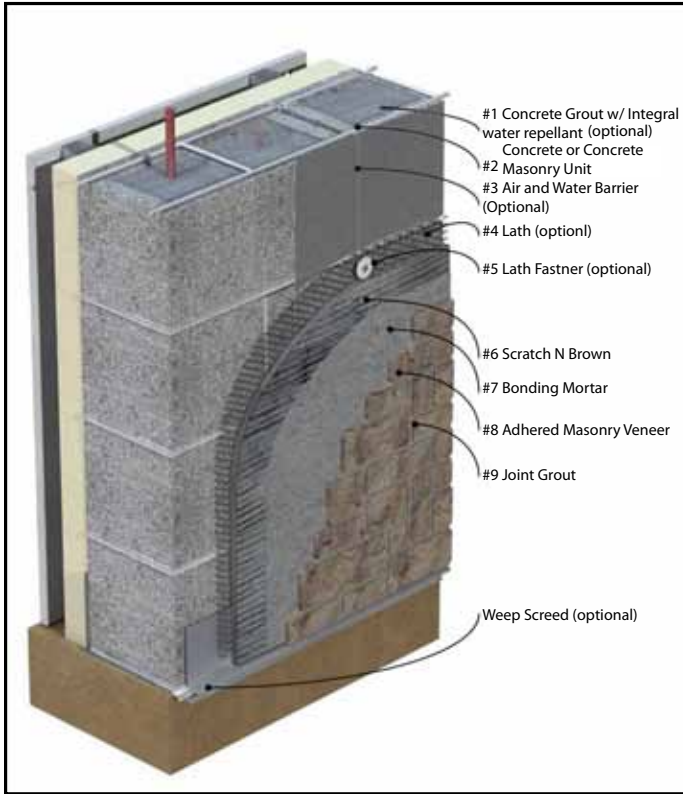


## Concrete or Concrete Block

### Exterior Wall

#### Lath-Cement Plaster Base



- #1 Concrete or Concrete Grout - with J4 R-Repel Aid (Optional)
- #2 Concrete or Concrete Masonry Unit
- #3 Air and Water Barrier - (Options)
  - R-Lastic                      -Silica Shield Primer #2 or #3
  - Cemcoat Seal           -2 layers WRB or specifications
- #4 Lath 3.4# galvanized diamond wire lath
- #5 Lath Fastener - Type and spacing per ASTM C-106.3
- #6 Scratch N Brown - (Options)
  - Mac Scratch N Brown - Premium
  - Mac Scratch N Brown - Plus
  - Mac Scratch N Brown
- #7 Bonding Mortar - (Options)

#### Thick Bed

- VBM Poly - 500, 300, LFT
- VBM

#### Thin Bed

- VBM Bonder
- VBM Poly Thinbrick
- VBM Thinset

- #8 Adhered Masonry Veneer
- #9 Joint Grout - (Options)

#### Masonry Sand (>3/8)

- Mac Mortar - Premium
- Mac Mortar - Plus
- Mac Mortar

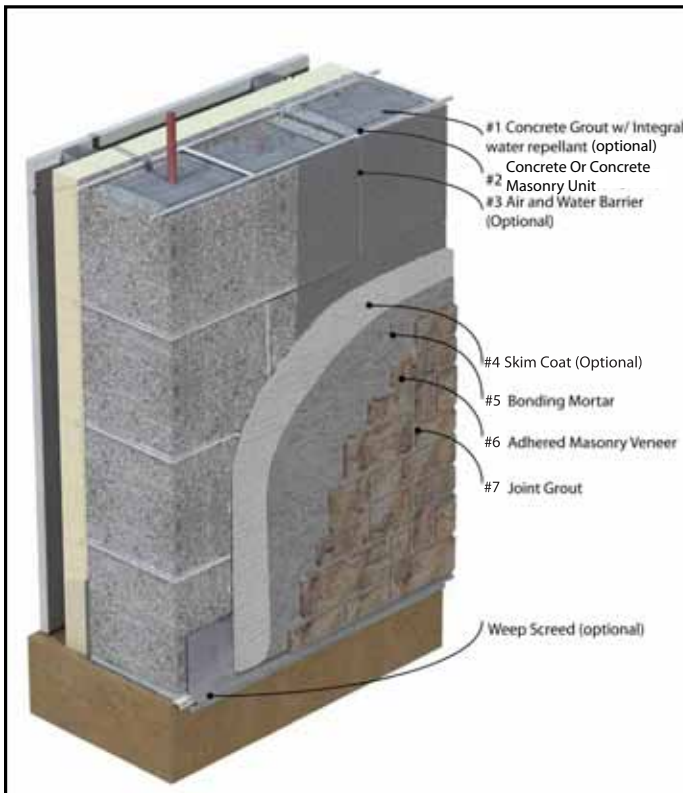
#### Fine Sand (1/8-5/8)

- VP Joint Grout - Premium
- VP Joint Grout

## Concrete or Concrete Block

### Exterior Wall

#### Direct Adhered



- #1 Concrete or Concrete Grout - with J4 R-Repel Aid (Optional)
- #2 Concrete or Concrete Masonry Unit
- #3 Air and Water Barrier - (Options)
  - R-Lastic                      -Silica Shield Primer #2 or #3
  - Cemcoat Seal           -2 layers WRB or specifications
- #4 Skim Coat (Optional)
- #5 Bonding Mortar - (Options)

#### Thick Bed

- VBM Poly - 500, 300, LFT
- VBM

#### Thin Bed

- VBM Bonder
- VBM Poly Thinbrick
- VBM Thinset

- #6 Adhered Masonry Veneer
- #7 Joint Grout - (Options)

#### Masonry Sand (>3/8)

- Mac Mortar - Premium
- Mac Mortar - Plus
- Mac Mortar

#### Fine Sand (1/8-5/8)

- VP Joint Grout - Premium
- VP Joint Grout